



47 Marsham Street, Westminster  
London SW1P

GARTONJONES.COM



47 Marsham Street, Westminster  
London, SW1P

GARTON JONES.COM

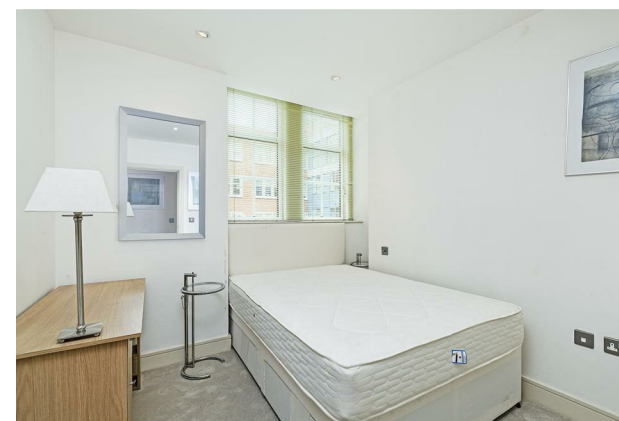
49 Marsham Street Lettings:  
London +44 (0) 20 7340 0480  
SW1P 3DP westminster@gartonjones.com  
www.gartonjones.com

£775 Per Week

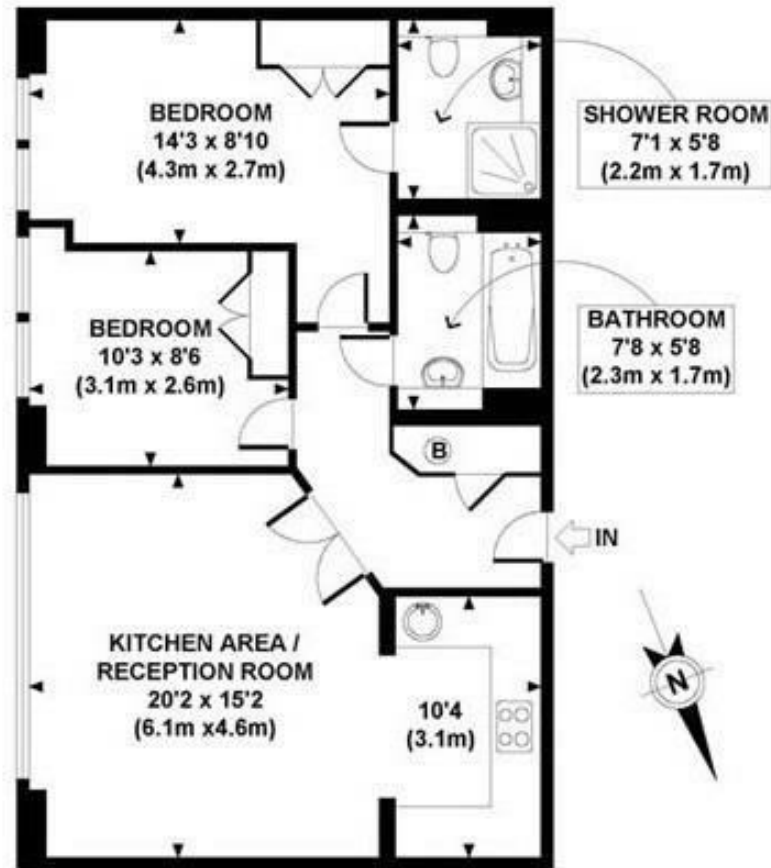
A well presented 2 bedroom apartment available to rent located in this popular development in the heart of Westminster. The internal living space comprises of an open plan reception room with views onto the pretty landscaped gardens, an integrated kitchen, 2 bedrooms both with fitted wardrobes and the master benefitting from an en-suite and further guest bathroom. As a resident of Romney House you will also have the use of a 24 hour concierge and a well-equipped gymnasium with a sauna and treatment room (online booking is required). The development is extremely convenient for access to many of the renowned local landmarks which include the Houses of Parliament, Westminster Abbey, Tate Britain Gallery and the River Thames. The local transport links of Victoria Station is nearby providing mainline UK services including the Gatwick Express as well as the underground services of Victoria, Pimlico, St James Park and Westminster. The area has an abundance of amenities and restaurants such as The Cinnamon Club, Osteria Dell'angolo and many more. Just a short walk away is the Chelsea College of Arts and St Johns Smith Square Concert Halls offering a variety of classical musical performances. Garton Jones are based on site and manage this apartment.

Deposit 5 Weeks  
Minimum Term 12 Months  
Council Tax Band F (London Borough of Westminster)  
EPC Rating C (69)

- 2 Bedroom Apartment
- 4th Floor (Lift)
- 672 Square Feet (62 Sq.M)
- Open Plan Reception Room
- Smart Integrated Kitchen
- 2 Bathrooms (En-Suite)
- Available: 18th September 2025
- 24 Hour Concierge and Resident Gymnasium (online booking is required)
- Close to Local Amenities
- Walking Distance to St James's Park, Westminster & Victoria Rail/Tube Links







FOURTH FLOOR  
GROSS INTERNAL  
FLOOR AREA 672 SQ FT  
APPROX. GROSS INTERNAL FLOOR AREA 672 SQ FT / 62 SQ M



